

In February

Open

Rpt G^{Δ9} F^{#9sus} B^{Δ9} B^{b9sus} E^{bΔ} D^{9sus}

A On Cue

G^{Δ9} C^{#7alt.} Cm⁹ F^{9sus} Em⁹ G^{Δ/D} C^{Δ9#11} D^{9sus}

G^{Δ9} C^{#7alt.} Cm⁹ F^{9sus} Em⁹ G^{Δ/D} C^{#∅} F^{#7sus}

B B^{Δ9} F^{7alt.} Em⁹ A^{9sus} G^{#m9} B^{Δ/F#} E^{Δ9#11} F^{#9sus}

B^{Δ9} F^{7alt.} Em⁹ A^{9sus} G^{#m9} B^{Δ/F#} F^{7alt.} B^{b7sus}

C E^{b/Bb} A^{7alt.} A^{bm9} D^{b7sus} E^{badd9/G} F^{#13} B^Δ E^Δ

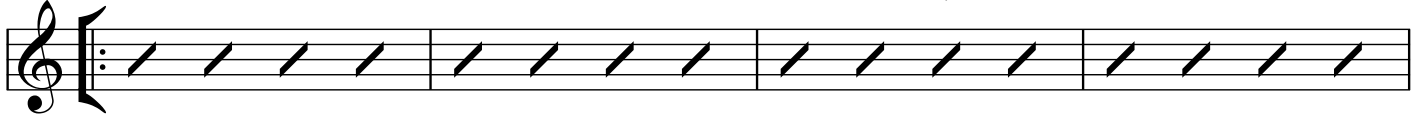
E^{b/Bb} A^{7alt.} A^{bm9} D^{b7sus} E^{badd9/G} F^{#13} B^Δ D^{9sus}

D G^{Δ9} C^{#7alt.} Cm⁹ F^{9sus} Em⁹ G^{Δ/D} C^{Δ9#11} D^{9sus} ⊕

G^Δ F^{#9sus} B^{Δ9} B^{b9sus} E^{bΔ9} D^{9sus}

Solos

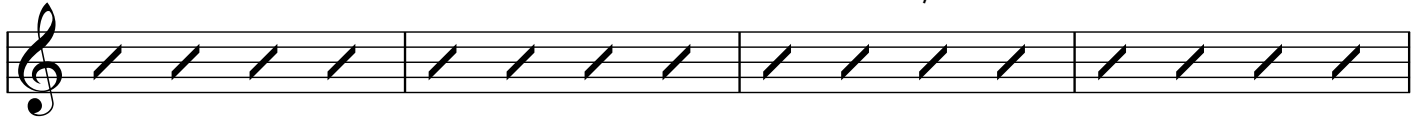
A G^{Δ9} C^{#7alt.} Cm⁹ F^{9sus} Em⁹ G^{Δ/D} C^{Δ9#11} D^{9sus}



G^{Δ9} C^{#7alt.} Cm⁹ F^{9sus} Em⁹ G^{Δ/D} C^{#∅} F^{#7sus}



B B^{Δ9} F^{7alt.} Em⁹ A^{9sus} G^{#m9} B^{Δ/F#} E^{Δ9#11} F^{#9sus}



B^{Δ9} F^{7alt.} Em⁹ A^{9sus} G^{#m9} B^{Δ/F#} F^{7alt.} B^{b7sus}



C E^{b/Bb} A^{7alt.} A^{b m9} D^{b7sus} E^{b add9/G} F^{#13} B^Δ E^Δ



E^{b/Bb} A^{7alt.} A^{b m9} D^{b7sus} E^{b add9/G} F^{#13} B^Δ D^{9sus}



D G^{Δ9} C^{#7alt.} Cm⁹ F^{9sus} Em⁹ G^{Δ/D} C^{Δ9#11} D^{9sus}



G^Δ F^{#9sus} B^{Δ9} B^{b9sus} E^{bΔ9} D^{9sus} D^{9sus}



After solos
D.S. al Coda

Open
Rpt

G^Δ F^{#9sus} B^{Δ9} B^{b9sus} E^{bΔ9} D^{9sus}

